

Products > Sapphire Rods & Tubes > Sapphire Rods & Ruby Rods > SP-18

Sapphire Rods & Ruby Rods - SP-18

Specifications

Model	SP-18
Outside Diameter	.0558/.0562"
Length	.1528/.1575"
Material	Polished/Ruby Rod

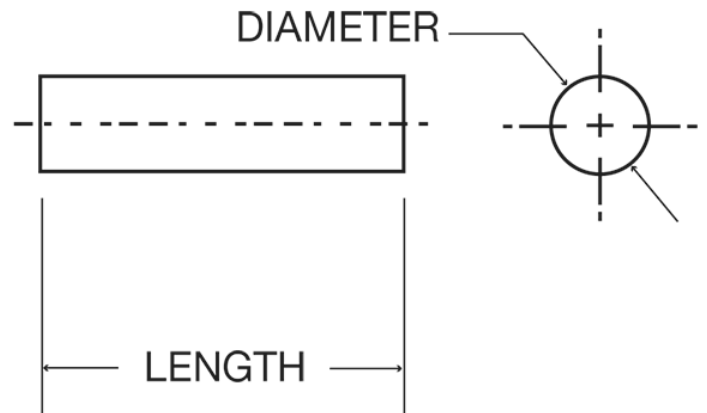


Description

Sapphire Rods are used in a wide range of applications. A sapphire rod can be made with all surfaces polished for optical and wear applications or with all surfaces fine grind (un-polished) to serve as an insulator. Sapphire Rods are available in a range of outer diameter and lengths. OD's as small as .0175".

Typical Applications

- Pumps
- Light Pipes
- Spacers
- Insulators
- Wear Applications



NOT SEEING EXACTLY WHAT YOU NEED?

We specialize in creating a wide range of custom optical components and custom mechanical components including a variety of shapes - from internal holes and tapers to outer flanges, angles and surface finishes. Contact us and we will consult with you to create a custom component that meets all of your specifications.